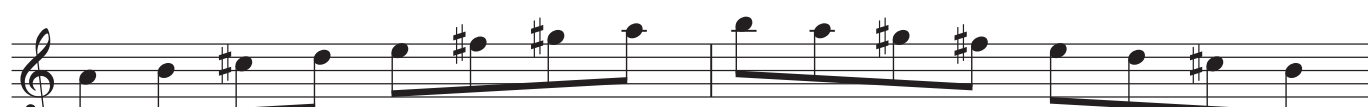
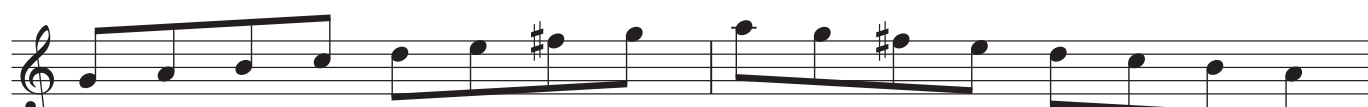
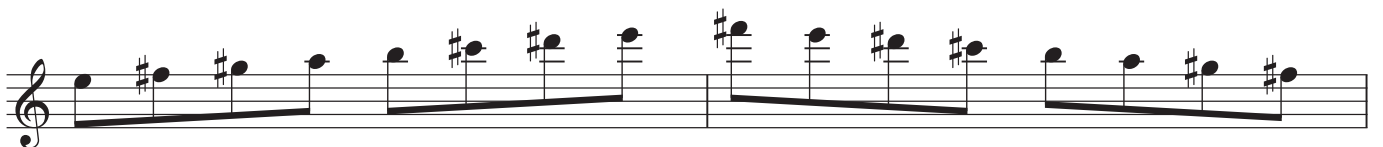
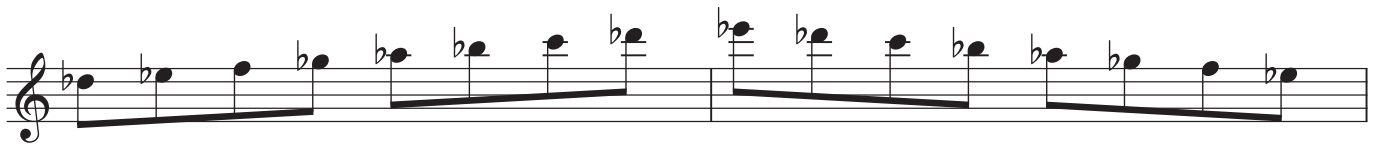


# Daily Scale Exercise



# Daily Scale Exercise



# Daily Scale Exercise



Daily Scale Exercise

The image displays five staves of musical notation for a daily scale exercise. Each staff begins with a treble clef. The first staff is in the key of D major, indicated by two sharps (F# and C#). The second staff is in the key of B minor, indicated by two flats (Bb and Eb). The third staff is in the key of D major, indicated by two sharps (F# and C#). The fourth staff is in the key of B minor, indicated by two flats (Bb and Eb). The fifth staff is in the key of D major, indicated by two sharps (F# and C#). Each staff contains a sequence of notes: the first two staves show a descending scale followed by an ascending scale, and the last three staves show an ascending scale followed by a descending scale. The notes are connected by beams, and the exercise concludes with a whole note on the final staff.