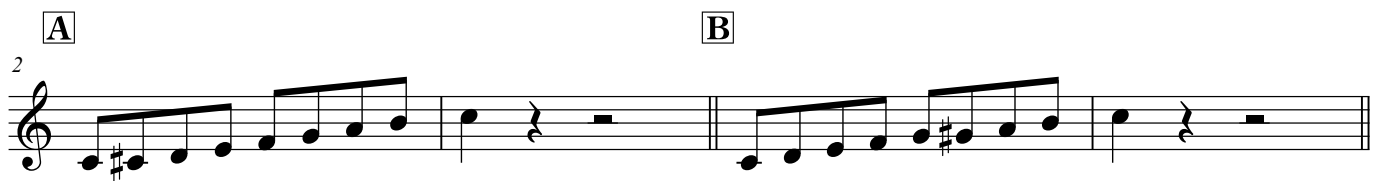


Cメジャースケールに半音階を混ぜる

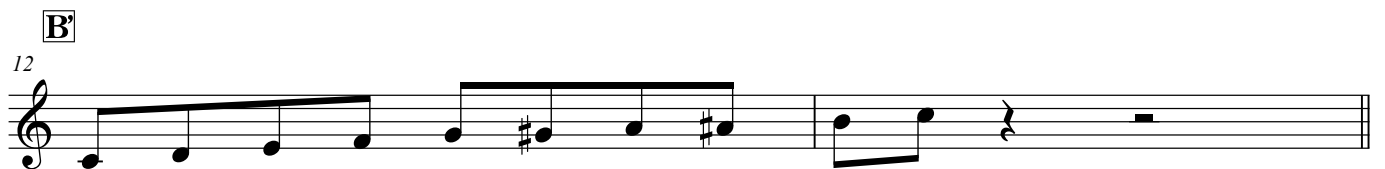
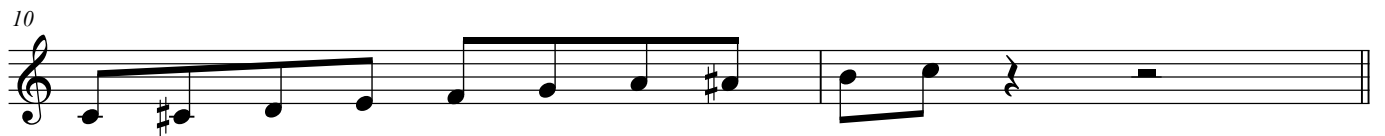
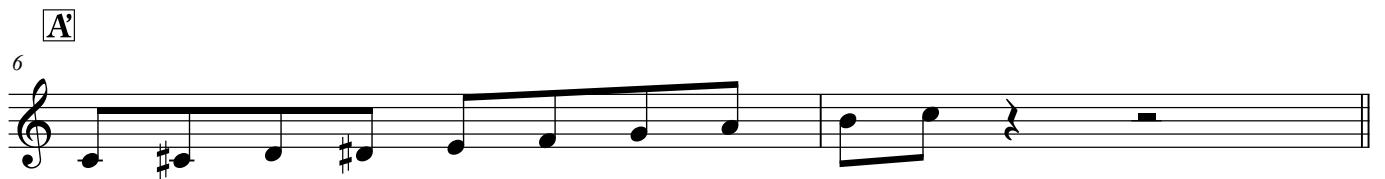
Cメジャースケール



Cメジャースケールの裏拍に1つ半音を混ぜる



さらにA、Bのパターンに半音階を足す



Cメジャースケールに半音階を混ぜる

半音階3つ以上まぜたもの

14



16



18



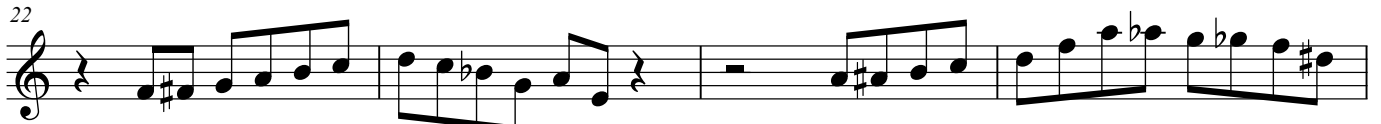
20




A musical score in treble clef showing four staves of music. Each staff begins with a measure number (14, 16, 18, 20) and contains two measures of music. The notes are: Staff 1: C4, C#4, D4, D#4, E4, F4, F#4, G4, A4, B4, C5, C5. Staff 2: C4, C#4, D4, D#4, E4, F4, F#4, G4, A4, B4, C5, C5. Staff 3: C4, C#4, D4, D#4, E4, F4, F#4, G4, A4, B4, C5, C5. Staff 4: C4, C#4, D4, D#4, E4, F4, F#4, G4, A4, B4, C5, C5.

ブルースで使った例


22



26



30



A musical score in treble clef showing three staves of music. Each staff begins with a measure number (22, 26, 30) and contains two measures of music. Chord symbols are placed above the staves: G7, C7, G7, C7, G7, Am7, D7, G7. The notes are: Staff 1: G4, A4, B4, C5, B4, A4, G4, F4, E4, D4, C4, C4. Staff 2: C4, C#4, D4, D#4, E4, F4, F#4, G4, A4, B4, C5, C5. Staff 3: C4, C#4, D4, D#4, E4, F4, F#4, G4, A4, B4, C5, C5.